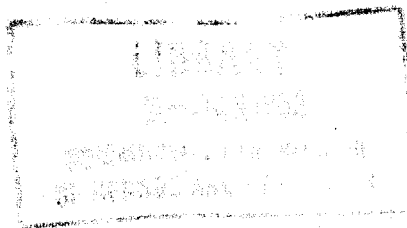


COMMONWEALTH BUREAU OF CENSUS AND STATISTICS,
CANBERRA, AUSTRALIA.

CENSUS OF MOTOR VEHICLES.

31st DECEMBER, 1955.

No. 6: TASMANIA.



PREPARED UNDER INSTRUCTIONS FROM
THE RIGHT HONORABLE THE TREASURER,
BY
S. R. CARVER,
ACTING COMMONWEALTH STATISTICIAN.

COMMONWEALTH BUREAU OF CENSUS AND STATISTICS,
CANBERRA, AUSTRALIA.

CENSUS OF MOTOR VEHICLES.

31st DECEMBER, 1955.

No. 6: TASMANIA.

PREPARED UNDER INSTRUCTIONS FROM
THE RIGHT HONORABLE THE TREASURER,

BY

S. R. CARVER,
ACTING COMMONWEALTH STATISTICIAN.

CENSUS OF MOTOR VEHICLES.

31st DECEMBER, 1955.

No. 6: TASMANIA.

PREFACE.

This Bulletin contains particulars of motor vehicles on the register in Tasmania at 31st December, 1955. It is one of a series of Bulletins which are being issued for each State, for the Northern Territory and the Australian Capital Territory and for Australia as a whole.

The statistics herein have been derived from particulars of motor vehicle registrations made available for all States and Territories. Figures herein relate to motor vehicles whose registrations were renewed during the year 1955 plus registrations of new vehicles and re-registrations of previously registered vehicles less registrations cancelled during the year.

Vehicles have been allocated to Local Government Areas according to the addresses of the owners shown on the registration certificates, and the vehicles themselves are therefore not necessarily located or generally used in such areas.

Vehicles owned by the Commonwealth Government, other than Defence Service vehicles, have been included in all tables.

All figures for horsepower are in terms of R.A.C. rating. Whole numbers only have been shown. For example, an R.A.C. rating of 17.9 h.p. is recorded in this Bulletin as 17 h.p.

The following vehicles have been included in each type—

Cars—

Sedan: Caleche Coupe Limousine Saloon Sedan Sedan Coupe Sports
Sedan

Open Car: Convertible Open Sports Roadster Tourer

Other: Ambulance Hearse

Station Wagons—Estate Car Station Coupe Station Wagon

Omnibuses—Coach Omnibus Parlour Coach

Utilities—Buckboard Coupe Utility Pick-up Utility.

Vehicles such as the Land Rover, Willys Jeep and Austin Champ are included under the heading of the body type constructed on the chassis, but in most cases such vehicles are classified as "utility".

Panel Van is defined as a "van body moulded in one unit with the cab integral"

Lorries—

Platform: Lorry Platform Truck Tray Tray Top and Sides Truck.

Van: Closed Van Furniture Van Horse Float Meat Wagon Pantech-
nicon Refrigerated Van.

Tipper: Dump Truck Tipper.

Articulated or Semi-trailer: Articulated Truck Lorry Type Tractor Low Loader
Prime Mover Semi-trailer.

Other: Amphibious Truck Bolster Truck Log and Winch Truck Sanitary
Wagon Scout Car Skeleton Wood Cart Timber Jinker Wood Chassis.

Other Commercial Vehicles—Concrete Agitator Fire Engine Milk Wagon Mobile
Winch Petrol Wagon Spray Wagon Straddle Truck Street Flusher Street
Sweeper Tanker Tow Truck Tower Wagon.

Motor Cycles—Motor Cycle Motor Scooter Pedal Cycle with motor attached.

The following vehicles have been excluded—Bulldozer, Crawler Tractor, Fork/Air Lift, Front End Loader, Grader, Industrial Barrow, Mobile Crane, Overloader, Rotary Hoe, Tractor, Trailers and vehicles without motive power (e.g., concrete mixers, air compressors and the like).

S. R. CARVER,
Acting Commonwealth Statistician.

CENSUS OF MOTOR VEHICLES.

31st DECEMBER, 1955.

No. 6: TASMANIA.

CONTENTS.

NUMBER OF TABLE.	PAGE.
1 Summary of Motor Vehicles on the Register at 31st December, 1955	1
2 Type of Vehicle according to Make, Horsepower (R.A.C.) and Year of Model:	
(i) Cars	2
(ii) Station Wagons	10
(iii) Utilities	11
(iv) Panel Vans	16
(v) Lorries	19
3 Make of Vehicle according to Type and Horsepower (R.A.C.) ..	23
4 Lorries: Carrying Capacity according to Make and Body Construction	34
5 Lorries: Unladen Weight according to Make and Body Construction	37
6 Diesel-powered Commercial Vehicles according to Make and Horsepower (R.A.C.)	40
7 Motor Cycles according to Make	41
8 Distribution of Vehicles according to Local Government Area and Statistical Division	42
Index of Local Government Areas	44

1

*No. 1—SUMMARY OF MOTOR VEHICLES ON THE REGISTER
AT 31st DECEMBER, 1955, TASMANIA.*

Type of Vehicle	Number of Vehicles
Cars—	
Sedan	41,140
Open Car	4,751
Other	63
Total Cars	45,954
Station Wagons	392
Omnibuses	660
Utilities	10,228
Panel Vans	2,512
Lorries—	
Platform	6,929
Van	78
Tipper	835
Articulated or Semi-trailer	408
Other	133
Total Lorries	8,383
Other Commercial Vehicles	161
All Motor Vehicles (excluding Motor Cycles)	68,290
Motor Cycles	5,073

No. 2—TYPE OF VEHICLE ACCORDING TO MAKE, HORSEPOWER (R.A.C.), AND YEAR OF MODEL; TASMANIA—continued.
(i) CARS—continued.

Make of Vehicle	Horse-power (R.A.C.)	Prior to 1930	Year of Model												Total	Percentage of Total Cars		
			1930-34	1935-39	1940-45	1946	1947	1948	1949	1950	1951	1952	1953	1954			1955	Not Stated
Morris	8	8	24	200	66	47	29	224	146	295	541	433	353	509	348	6	3,229	..
	10	..	24	35	20	14	18	223	1	335	..
	11	24	5	41	70	..
	12	3	3	6	..
	13	16	5	1,331	..
	14	..	20	3	6	146	157	333	330	76	139	122	..	34	..
	15	..	11	1	1	15	..
	17	..	13	11	16	..
	19	..	4	1	..
	20	..	1	9	127	33	9	1	179	..
	25	19	19	..
	Not Stated	7	..
Total Morris	..	52	90	327	89	61	47	453	301	530	907	772	429	648	470	7	5,242	11.4
Nash	21	7	..	1	6	..	1	8	..
	23	15	7	2	9	3	..	43	..
	25	6	1	2	9	..
	26	..	1	1	..
	27	..	3	19	1	1	4	6	34	..
	28	..	1	5	..
	31	4	1	3	..
Total Nash	..	32	13	25	1	3	13	12	..	1	3	..	103	0.2
Oakland	18	1	1	..
	19	19	19	..
	25	10	1	11	..
	27	12	1	13	..
	37	..	2	2	..
Total Oakland	..	42	4	46	0.1
Oldsmobile	18	20	20	..
	19	29	29	..
	24	59	71	..
	26	..	12	111	..
	28	24	24	87	154	..
	29	..	19	135	19	..	6	17	5	6	2	58	..
	30	..	1	1	..
	33	1	..
	Not Stated	1	..
Total Oldsmobile	..	108	36	223	20	21	6	17	5	6	2	1	3	448	1.0
Packard	27	2	2	..
	28	3	..
	29	2	16	..
	32	..	2	7	4	1	1	..	1	2	..
	33	8	..
	39	2	1	..	1	6	..
	Not Stated	1	..
Total Packard	..	4	3	16	5	1	1	2	3	1	..	1	1	38	0.1
Peugeot	11	1	11	..
	13	9	1	12	15	7	88	30	16	..	118	..
	22	1	..
Total Peugeot	1	1	9	1	12	15	7	38	30	16	..	130	0.3

No. 2—TYPE OF VEHICLE ACCORDING TO MAKE, HORSEPOWER (R.A.C.), AND YEAR OF MODEL, TASMANIA—continued.

(i) CARS—continued.

TASMANIA.

7

Make of Vehicle	Horse-power (R.A.C.)	Year of Model												Total	Percentage of Total Cars		
		Prior to 1930	1930-34	1935-39	1940-45	1946	1947	1948	1949	1950	1951	1952	1953			1954	1955
Plymouth	21	33	27	396	29	8	33	31	31	72	69	22	73	52	8	60	..
	23	4	80	8	10	511	..
	25	33	..
	27	396	..
	28	48	..
Not Stated
Total Plymouth..	..	37	107	404	32	8	33	31	72	69	22	73	52	8	1,056	2.3	
Pontiac	25	85	1	86
	26	39	23	62
Total Pontiac	27	63
	28	112
	30	85
	32	23
	33	6
45	1	
Not Stated
Total Pontiac	..	124	41	170	17	15	11	18	6	7	3	9	26	3	439	1.0	
Renault	7	117
	8	2
Total Renault	17	11
	Not Stated
Riley	9	1
	11	131	0.3	..
Total Riley	16	6
	8	29
	9	40
	Not Stated	75	0.2	..
	11	1
Total Rover	9	2
	11	1
	13	1
	15	1
	19	1
Total Rover Singer	7	7
	8	72
	9	186
	10	2
	13	8
15	97	
Not Stated	2	
Total Singer	..	9	24	93	10	9	6	49	75	21	31	19	12	5	375	0.8	

No. 2—TYPE OF VEHICLE ACCORDING TO MAKE, HORSEPOWER (R.A.C.), AND YEAR OF MODEL, TASMANIA—continued.

(i) CARS—continued.

Make of Vehicle	Horse-power (R.A.C.)	Year of Model											Total	Percent- age of Total Cars				
		Prior to 1930	1930-34	1935-39	1940-45	1946	1947	1948	1949	1950	1951	1952			1953	1954	1955	Not Stated
Skoda	11	13	11	18	2	44	..
Total Skoda	12	13	11	18	2	3	0.1
Standard	7	42	19	84	..
	8	20	17	257	..
	9	..	9	23	191	..
	10	..	16	33	9	60	..
	11	..	1	33	3	38	..
	12	..	2	2	..
	13	..	5	31	2	45	..
	14	..	1	1	..
	15	..	3	3	..
	16	1	..
	17	13	..	203	222	95	102	..	243	1,124	..
	19	..	2	5	..
	20	1	..
	Not Stated
Total Standard	3	37	118	29	73	34	133	203	222	95	102	421	266	3	1	1,813	3.9
Studebaker	21	8	5	2	5	4	1	3	38	..
	23	..	27	54	3	..
	25	15	5	81	..
	26	20	..
	27	..	29	37	..
	29	..	1	2	..
	30	..	13	..	1	26	..
	35	1	..
	36	1	2	..
Total Studebaker	36	49	88	11	2	5	5	1	3	2	210	0.5
Sunbeam	9	10	14	..
	13	14	..	6	8	6	4	25	..
	16	23	..
	20	1	..
	25	1	..
Total Sunbeam	3	1	24	..	6	8	6	4	1	3	64	0.1
Triumph	7	..	5	5	..
	8	..	3	3	..
	9	..	2	95	..
	10	1	..
	13	2	..
	15	1	..
	17	15	..
Total Triumph	10	1	..	4	1	2	..	6	3	122	0.3

TASMANIA.

No. 2—TYPE OF VEHICLE ACCORDING TO MAKE, HORSEPOWER (R.A.C.), AND YEAR OF MODEL, TASMANIA—continued.
(i) CARS—continued.

Make of Vehicle	Horsepower (R.A.C.)	Year of Model													Total	Percentage of Total Cars	
		Prior to 1930	1930-34	1935-39	1940-45	1946	1947	1948	1949	1950	1951	1952	1953	1954			1955
Vauxhall ..	10 11 13 14 15 17 19 20 23 24 26 Not Stated 3 1 65 2 52	216 6 511	156 7 122	26 122 128	69 56 48	1 167 34 13	140 240	41 109	15 4 88 14 1 55 240 22 146	399 623 911 95 693 2 2 448 42 66
Total Vauxhall ..	13	6	119	285	276	117	104	410	380	150	125	58	295	168	11	7.2	
Volkswagen ..	14	
Total Volkswagen	15	170	54	160	65	..	
Whippet ..	18	14	131	227	0.6	
..	21	5	
..	23	9	
..	25	1	
..	Not Stated	
Total Whippet ..	Not Stated	198	62	23	1	..	
Willys ..	15	
..	20	21	6	23	..	1	1	262	..	
..	21	2	309	..	
..	25	2	27	..	
..	27	3	15	..	
..	Not Stated	3	..	
Total Willys ..	Not Stated	28	59	23	5	0.8	
Wolseley ..	8	
..	9	
..	10	
..	11	
..	12	
..	13	
..	14	
..	15	
..	17	
..	20	
..	25	
..	Not Stated	
Total Wolseley ..	Not Stated	1	11	2	1	3	51	25	52	1	41	31	114	26	2	1.1	
Total Other	54	32	4	1	5	7	17	10	1	22	13	197	0.4	
Total Cars	2,308	1,943	7,595	1,289	928	2,141	2,621	4,009	4,137	3,645	3,692	6,424	4,208	45,954	100.0	

No. 2—TYPE OF VEHICLE ACCORDING TO MAKE, HORSEPOWER (R.A.C.), AND YEAR OF MODEL, TASMANIA—continued.
(ii) STATION WAGONS.

Make of Vehicle	Horse-power (R.A.C.)	Year of Model												Total	Percentage of Total Station Wagons				
		Prior to 1930	1930-34	1935-39	1940-45	1946	1947	1948	1949	1950	1951	1952	1953			1954	1955	Not Stated	
Austin ..	8	3	..
Total Austin ..	10	56	..
Chevrolet ..	15	4	..
Total Chevrolet ..	21	1	63	16.0
Commer ..	29	1	2	..
Total Commer ..	10	1	3	0.8
Total Commer ..	13	2	..
Total Fargo ..	28	9	2.3
Total Fiat ..	6	1	0.3
Total Ford ..	10	16	4.1
Total Ford ..	24	1	43	..
Total Ford ..	30	1	..
Total Ford ..	32	1	2	..
Hillman ..	9	47	12.0
Total Hillman ..	10	3	..
Total Hillman	68	..
Total International ..	30	71	18.1
Total Jowett ..	7	1	0.3
Total Land Rover ..	11	17	4.4
Total Morris ..	13	2	0.5
Total Morris ..	15	10	..
Total Morris ..	Not Stated	69	..
Total Morris	1	..
Total Peugeot ..	13	87	20.6
Total Renault ..	17	6	1.5
Total Skoda ..	11	7	0.3
Total Standard ..	17	8	2.0
Total Volkswagen ..	13	48	12.2
Total Volkswagen ..	14	1	..
Total Volkswagen	8	..
Total Willys ..	15	9	2.3
Total Willys	1	4	1.0
Total Other	5	1.3
Total Station Wagons	3	..	1	1	2	3	9	5	71	62	52	30	94	58	1	..	392	100.0

No. 2—TYPE OF VEHICLE ACCORDING TO MAKE, HORSEPOWER (R.A.C.), AND YEAR OF MODEL, TASMANIA—continued.
(iii) UTILITIES.*

Make of Vehicle	Horsepower (R.A.C.)	Year of Model											Total	Percentage of Total Utilities				
		Prior to 1930	1930-34	1935-39	1940-45	1946	1947	1948	1949	1950	1951	1952			1953	1954	1955	Not Stated
Total Armstrong Siddeley Austin	18	9	0.1
	7	7	..
Total Austin Bedford	10	396	..
	12	3	..
	13	1	..
	15	79	..
Total Bedford Buick	22	1	..
	Not Stated	1	..
	10	488	4.8
	11	56	..
	14	297	..
Total Buick Chevrolet	Not Stated	3	..
	18	3	..
	21	404	4.0
	23	5	..
	26	3	..
	27	13	..
	28	3	..
	29	6	..
	30	4	..
	31	8	..
	21	2	..
	26	1	..
	29	45	0.5
Total Chevrolet Chrysler	30	188	..
	Not Stated	220	..
	21	1	..
	23	940	..
	25	2	..
	27	1	..
	29	3	..
	31	2	..
	9	7	..
	10	1,357	13.3
	13	15	..
Total Chrysler Commer	Not Stated	11	..
	9	15	..
	10	14	..
	13	3	..
	16	1	..
Total Commer	Not Stated	35	0.3
	9	227	..
Total Commer	Not Stated	105	..
	10	35	..
Total Commer	Not Stated	1	..
	9	373	3.6

No. 2—TYPE OF VEHICLE ACCORDING TO MAKE, HORSEPOWER (R.A.C.), AND YEAR OF MODEL, TASMANIA—continued.
(iii) UTILITIES—continued.

Make of Vehicle	Horse-power (R.A.C.)	Year of Model													Total	Percentage of Total Utilities										
		Prior to 1930	1930-34														1951	1952	1953	1954	1955	Not Stated				
			1930-34	1935-39	1940-45	1946	1947	1948	1949	1950	1950	1951	1952	1953									1954	1955		
G.M.C.	29	..	6	3	10	3	22	..	
Total G.M.C.	30	..	1	17	2	20	0.4	
Hillman	7	20	12	42	..	
Total Hillman	12	14	2	28	..	
Total Holden	3	..	
Hudson	10	1	1	..	
Total Hudson	12	1	2	0.3	
Hupmobile	21	1	12	14	33	..	
Total Hupmobile	21	1	12	14	1,616	15.8	
International	21	5	..	
Total International	29	4	4	0.1	
Hupmobile	16	4	9	..	
Total Hupmobile	16	4	9	..	
International	26	3	31	37	24	3	..	
Total International	30	3	31	37	24	4	..	
International	Not Stated	1	..
Total International	Not Stated	15	1	0.2	
International	16	17	..	
Total International	26	1	..	
International	30	218	..	
Total International	30	260	..	
International	Not Stated	2	..
Total International	Not Stated	2	..
International	481	4.7
International	7	17	..
Total Jewett/Bradford	11	218	..
Land Rover	15	359	..
Total Land Rover	15	577	5.6
Morris	8	160	..
Total Morris	8	15	..
Morris	10	37	..
Total Morris	10	15	..
Morris	11	37	..
Total Morris	11	37	..
Morris	13	359	..
Total Morris	13	359	..
Morris	15	108	..
Total Morris	15	108	..
Morris	Not Stated	1	..
Total Morris	Not Stated	9	1	..
Morris	23	8	20	23	4	675	6.6
Total Morris	23	8	20	23	4	675	6.6
Morris	25	3	9	..
Total Morris	25	3	9	..
Morris	27	4	..
Total Morris	27	4	..
Morris	28	3	..
Total Morris	28	3	..
Morris	33	1	..
Total Morris	33	1	..
Morris	19	14	1	20	0.2
Total Morris	19	14	1	20	0.2
Morris	25	13	13	..
Total Morris	25	13	13	..
Morris	27	4	8	..
Total Morris	27	4	8	..
Morris	..	25	4	..
Total Morris	..	25	4	..
Morris	..	27	25	0.2
Total Morris	..	27	25	0.2

No. 2—TYPE OF VEHICLE ACCORDING TO MAKE, HORSEPOWER (R.A.C.), AND YEAR OF MODEL, TASMANIA—continued.
(iii) UTILITIES—continued.

Make of Vehicle	Horse-power (R.A.C.)	Year of Model											Total	Percentage of Total Utilities				
		Prior to 1930	1930-34	1935-39	1940-45	1946	1947	1948	1949	1950	1951	1952			1953	1954	1955	Not Stated
Oldsmobile	18	5															5	
	19	18															18	
	24	19	2														21	
	26		2														2	
	28		2														2	
Total Oldsmobile	Not Stated																1	
	42	42	2														50	0.5
	13		4														10	0.0
	21		6	3													12	
	23	1	2	1													23	0.2
Total Plymouth	27	7	6	4													18	
	25	26	6														1	
	26	12															1	
	27	27	1														1	
	28	38	7	1													46	0.4
Total Pontiac	8		4														13	
	9		1														22	
	13		1														15	
	Not Stated																1	
	7		1														1	
Total Singer	Not Stated																1	
	7		5														51	0.5
	8		1														1	
	9		1														1	
	11		1														7	
Total Standard	13		1														5	
	17		1														2	
	21		3														287	
	23	1	2														303	3.0
	25		2														11	
Total Studebaker	Not Stated																1	
	21		3														1	
	23	1	2														2	
	26		1														1	
	27	11	3														14	
Total Studebaker Triumph	36	3	3														3	
	7	1	1														1	
	9	1															2	
	10	1															3	
	11		3														1	
Total Triumph Vauxhall	14		1														1	
	15		1														1	
	20	1															30	
	23																1	
	Not Stated																160	
Total Vauxhall		1	3	3	1												1	
																	201	2.0

No. 2—TYPE OF VEHICLE ACCORDING TO MAKE, HORSEPOWER (R.A.C.), AND YEAR OF MODEL, TASMANIA—continued.
(iii) UTILITIES—continued.

Make of Vehicle	Horse-power (R.A.C.)	Year of Model											Total	Percentage of Total Utili-ties				
		Prior to 1930	1930-34	1935-39	1940-45	1946	1947	1948	1949	1950	1951	1952			1953	1954	1955	Not Stated
Volkswagen ..	13	1	..
Total Volkswagen	14	14	..
Whippet ..	15	26	20	15	0.1
..	18	7	7	..
..	21	1	1	..
..	25	..	2	2	..
..	Not Stated
Total Whippet ..	15	34	22	18	62	1	..	1	1	..
Willys ..	20	3	1	3	..
..	21	1	1	..
..	25	1	3	4	..
..	27	3	3	..
Total Willys ..	27	8	6	18	62	1	..	1	3	..
Total Other	23	7	4	112	1.1
Total Utilities	805	287	927	602	344	272	438	544	954	966	893	927	1,401	818	50	10,228	100.0

No. 2—TYPE OF VEHICLE ACCORDING TO MAKE, HORSEPOWER (R.A.C.), AND YEAR OF MODEL, TASMANIA—continued.
(V) LORRIES—continued.

Make of Vehicle	Horse-power (R.A.C.)	Year of Model												Total	Percentage of Total Lorries					
		Prior to 1930	1930-34	1935-39	1940-45	1946	1947	1948	1949	1950	1951	1952	1953			1954	1955	Not Stated		
Reo	23 24 27 29 31 36 40	1 1	1 1	1 1 2 9 5 17		
Total Reo Scammell	Not Stated	2	2	2	1 47	0.5		
Total Scammell Seddon	18 43	1 1 1 2 4	0.0	
Total Seddon Studebaker	29 38 25 26 27 31	1 1 1 2 4 5 4 16 1 1	0.1	
Total Studebaker Thornycroft	Not Stated	1	10	1	1	1	1	1	1	1	1	1	1	1	1	1	1 23	0.3	
Total Thornycroft Whippet	24 28 30 31 15	1 1 1 4 7	0.1
Total Whippet White	23 25 28 29 30 31 33 36 38	1 1 1 1 1 1 1 1 1	0.0
Total White Total Wallys Total Other	16 1 4 1 1 1 1 94 9 126 3 84	1.5 0.0 1.0
Total Lorries	..	155	147	789	1,502	445	331	590	578	808	840	556	510	638	438	56	8,383	100.0		

No. 3—MAKE OF VEHICLE ACCORDING TO TYPE AND HORSEPOWER (R.A.C.), TASMANIA—continued.

Make of Vehicle	Horse-power (R.A.C.)	Motor Cars			Station Wagons	Omni-buses	Utili-ties	Panel Vans	Plat-form	Van	Lorries			Other Com-mercial Vehicles	Total
		Sedan	Open	Other							Tipper	Articu-lated or Semi-Trailer	Other		
Buick	18	..	3	8	
	21	..	3	5	6	
	23	..	15	3	39	
	26	..	12	5	1	1	22	
	27	..	1	8	15	
	28	..	17	2	23	
	29	..	5	4	1	19	
	30	..	236	1	1	1	241	
	31	..	2	3	
	32	..	2	2	
	33	1	1	
	37	..	14	..	1	15	
	Not Stated	3
	Total Buick	..	303	42	3	45	3	1	397
Chevrolet	21	..	49	..	1	..	188	14	1	638	
	26	..	761	2	2	4	220	45	163	..	1	1,557	
	29	..	1,671	48	5	2	940	147	804	12	73	8	16	3,784	
	30	..	131	9	2	2	143	..	20	22	1	330	
	Not Stated	..	16	2	7	3	3	31	
	Total Chevrolet	..	2,628	742	7	3	1,357	211	1,161	13	96	30	5	19	6,340
	Chrysler	21	..	13	15	1	53
		23	..	48	15	14	78
		25	..	20	1	1	..	3	25
		27	..	84	2	1	87
28		..	5	5	
29		1	
31		1	
33		..	17	17	
Not Stated		1
Total Chrysler		..	187	43	1	35	1	1	268
Citroen		11	..	1	1
		15	..	24	1
		19	1	24
	Not Stated	1	
	Total Citroen	..	26	1	27	
	Commer	9	26
		10	5	21	26
		13	7	..	227	206	440
		16	1	2	1	105	14	63	2	..	189
		20	35	6	66	4	..	111
		22	3	3
		23	3	4
28		1	1	
26		1	153	3	33	7	1	202	
29		39	1	5	5	1	51	
33		38	46	..	3	13	2	104	
38		1	1	
Not Stated		1	..	1	3
Total Commer		9	41	373	248	375	4	42	31	5	6	1,135

No. 3—MAKE OF VEHICLE ACCORDING TO TYPE AND HORSEPOWER (R.A.C.), TASMANIA—continued.

Make of Vehicle	Horse-power (R.A.C.)	Motor Cars			Station Wagons	Omni-buses	Utili-ties	Panel Vans	Lorries				Other Commercial Vehicles	Total	
		Sedan	Open						Other	Van	Tipper	Articu-lated or Semi-Trailer			Other
			Other												
Fargo	23	4	..	1	36		
	25	22		
	27	8	258	13	7	353		
	28	4	1	18	40	15	..	28	14	1	..	306	
	29	3	2	1	10	
	Not Stated	1	2	
Total Fargo Federal	19	4	1	29	32	..	38	15	1	..	729		
	27	2		
	29	1	8		
	31	6	3		
	33	2	6		
Total Federal Fiat	57	8	2		
	6	16	..	8	..	1	3	4		
	8	25		
	10	82		
	11	2	14		
Total Fiat Foden	11	33		
	13	127		
	16	1		
	17	18		
	19	1	2		
Total Ford	20	12		
	36	30	16	..	8	1		
	43	290		
	7	1		
	10	28		
Total Ford G.M.C.	15	29		
	22	353		
	23	183	9	3,684		
	24	151	43	..	458	954		
	28	988	14	51		
Total G.M.C.	22	1,172		
	23	15	718		
	24	391	1	25	607	95	42	42	7	22	3,537		
	30	142	2	42	696	22	85	39	5	11	2,954		
	32	1	..	2	12		
Total G.M.C. (Total)	33	2	1		
	36	5	5	199		
	42		
	Not Stated	1	10	1	57		
	24	3	47	70	2,130	595	132	6	52	13	13,692		
Total G.M.C. (Total)	25	1		
	26	1		
	29	1	9		
	30	7	22	5	4	62		
	34	1	20	3	4	98		
Total G.M.C. (Total)	Not Stated	1	10	14		
	10	9	..	6	1		
	42	187		

No. 3—MAKE OF VEHICLE ACCORDING TO TYPE AND HORSEPOWER (R.A.C.), TASMANIA—continued.

Make of Vehicle	Horse-power (R.A.C.)	Motor Cars			Station Wagons	Omni-buses	Utili-ties	Panel Vans	Lorries				Other Commercial Vehicles	Total
		Sedan	Open	Other					Plat-form	Van	Tipper	Articu-lated or Semi-Trailer		
<i>Total Goliath</i>	6	10	10
Graham and Graham-Paige	21	25	2	4	25
	23	7	6
	25	1	7
	27	1	1
	29	2
	36	1
<i>Total Graham and Graham-Paige</i>	..	36	5	42
Hillman	9	819	30	..	3	..	28	5	885
	10	1,564	2	..	68	..	3	2	1,639
	12	..	3	2	5
	13	19
	14	284	284
	15	1	1	2
	20	36	36
	Not Stated	7	1	8
<i>Total Hillman</i>	..	2,730	36	..	71	..	33	8	2,878
<i>Total Holden</i>	21	6,681	5	..	1	..	1,616	174	8,471
Hudson	21	215	5	2	228
	24	2	2
	28	76	..	2	78
	29	3	2	1	4	10
	30	54	54
	34	3	3
	Not Stated	1	1
<i>Total Hudson</i>	..	354	7	3	1	..	9	2	376
Humber	8	1	2	3
	11	5	5
	13	108	108
	16	369	369
	20	30	30
	23	9	9
	26	228	..	1	2	231
	29	79	79
	29	829	2	1	2	..	9	1	834
<i>Total Humber</i>	16	3	7	3	21
Hupmobile	23	13	3	4	21
	25	1	4	7
	26	1	1
	27	1	1
	28	5	3	8
	29	7	7
	32	1	1
	Not Stated	1	17	1	1	2
<i>Total Hupmobile</i>	..	33	17	17	1	69

TASMANIA.

No. 3—MAKE OF VEHICLE ACCORDING TO TYPE AND HORSEPOWER (R.A.C.), TASMANIA—continued.

Make of Vehicle	Horse-power (R.A.C.)	Motor Cars			Station Wagons	Omni-buses	Utili-ties	Panel Vans	Lorries				Other Commercial Vehicles	Total
		Sedan	Open	Other					Plat-form	Van	Tipper	Articu-lated or Semi-Trailer		
<i>Vauxhall - continued</i>	20	2	20	3
	23	428	608
	24	42	42
	26	58	66
	Not Stated	9	2	12
<i>Total Vauxhall</i>	..	2,874	421	3,497
<i>Volkswagen</i>	..	64	1	71
	14	227	267
<i>Total Volkswagen</i>	..	291	1	338
<i>Whippet</i>	..	37	188	279
	15	3	11	21
	18	1	4	6
	21	1	12	18
	23	4	6
	25	1	4
	Not Stated	1	2
<i>Total Whippet</i>	..	46	216	330
<i>White</i>	17
	28	1
	29	1
	30	12
	31	1
	33	1
	36	1
	38	105
<i>Total White</i>	9
<i>Willys</i>	..	291	18	146
	15	20	13	2
	20	14	1	423
	21	1	9	32
	25	9	6	4
	27	2	1	22
	Not Stated	5	6
<i>Total Willys</i>	..	322	39	5
<i>Wolseley</i>	..	8	492
	9	12	1	4
	10	153	14
	11	3	153
	12	20	3
	13	65	21
	14	23	65
	15	1	23
	17	42	1
	20	169	42
	25	7	169
	Not Stated	2	7
<i>Total Wolseley</i>	..	501	1	2
<i>Total Other</i>	..	127	48	504
	273
Grand Total	..	41,140	4,751	63	392	660	10,228	2,512	6,929	78	835	408	133	68,290

No. 4—LORRIES: CARRYING CAPACITY ACCORDING TO MAKE AND BODY CONSTRUCTION, TASMANIA—continued.

Make of Vehicle	Body Construction	Carrying Capacity										Total	
		Under 10 cwt.	10 and under 15 cwt.	15 and under 20 cwt.	20 and under 40 cwt.	40 and under 60 cwt.	60 and under 80 cwt.	80 and under 100 cwt.	100 and under 140 cwt.	140 and under 240 cwt.	240 cwt. and over		Not Stated
Fargo ..	Platform	2	21	25	111	41	91	2	..	1	294
..	Van	1	12	7	18	2
..	Tipper	1	3	1	7	38
..	Semi-Trailer	1	15
..	Other	1
Total Fargo	2	21	27	127	49	117	6	..	1	350
Federal ..	Platform	2	3	5	..	2	..	1	..	13
..	Tipper	1	1
..	Semi-Trailer	3	3
Total Federal	2	2	3	6	..	2	17
Foden ..	Platform	1	7	13
..	Tipper	2
..	Semi-Trailer	2
..	Other	6
Total Foden	1	25
Ford ..	Platform	3	24	43	120	230	236	486	8	11	12	1,163
..	Van	2	..	2	1	2	1	6
..	Tipper	5	1	5	19	25	81	11	132
..	Semi-Trailer	11	5	22	11	..	2	52
..	Other	1	3	5	4	13
Total Ford	4	24	44	128	261	271	595	24	17	14	1,366
G.M.C. ..	Platform	1	1	6	20	31	33	12	2	..	1	107
..	Tipper	1	..	5	6
..	Semi-Trailer	1	3
Total G.M.C.	1	1	6	20	32	33	18	3	..	1	116
International ..	Platform	3	8	84	123	101	391	539	55	1	6	1,311
..	Van	6	3	1	8	13
..	Tipper	2	..	9	51	117	1	188
..	Semi-Trailer	1	3	3	11	24	28	..	2	77
..	Other	1	9	19	24	..	1	54
Total International	3	8	90	126	119	465	700	116	7	9	1,643
Total Karrier ..	Platform	1	..	1	2
..	Platform	5	30	47
..	Van	1	1
..	Tipper	1	5	2	33
..	Semi-Trailer	8	20	31
..	Other	3	1	5
Total Leyland	6	46	33	28	4	117
Mack ..	Platform	2	13	1	..	16
..	Tipper	1	1
..	Semi-Trailer	2	7	11
..	Other	2	5	8
Total Mack	6	26	4	..	36
Mercedes Benz ..	Platform	1	..	6	7
..	Tipper	1	1
..	Other	1	1
Total Mercedes Benz	1	..	8	9

No. 4—LORRIES: CARRYING CAPACITY ACCORDING TO MAKE AND BODY CONSTRUCTION, TASMANIA—continued.

Make of Vehicle	Body Construction	Carrying Capacity										Total		
		Under 10 cwt.	10 and under 15 cwt.	15 and under 20 cwt.	20 and under 40 cwt.	40 and under 60 cwt.	60 and under 80 cwt.	80 and under 100 cwt.	100 and under 140 cwt.	140 and under 240 cwt.	240 cwt. and over		Not Stated	
Morris ..	Platform	5	256	75	25	4	97	3	465
..	Van	4	2	6
..	Tipper	1	9	10
..	Semi-Trailer	7	5	20
Total Morris	5	268	83	25	4	113	3	501
Oldsmobile	Platform	3	14
..	Tipper	1	1
Total Oldsmobile	3	10	1	1	9	5	1	15
Reo ..	Platform	22
..	Van	1
..	Tipper	1
..	Semi-Trailer	13
..	Other	4
Total Reo	1	4	3	13	15	4	4	1	41
Scammell ..	Tipper	1
..	Semi-Trailer	1
Total Scammell	2
Seddon ..	Platform	4
..	Other	4
Total Seddon	8
Studebaker	Platform	2
..	Tipper	3	2	5	11	1	4	5
Total Studebaker	3	2	5	11	1	4	22
Thornycroft	Platform	1
..	Semi-Trailer	1
..	Other	5
Total Thornycroft	7
Total Whippet	Platform	1
..	Platform	2	1
..	Tipper	3
..	Semi-Trailer	9
..	Other	25
Total Whippet	1	85
White ..	Platform	9
..	Tipper	9
..	Semi-Trailer	7
..	Other	26
Total White	126
Total Willys	Platform	3	3
..	Platform	10	3	4	5	29	3	55
..	Van	1	1	4	13
..	Tipper	6
..	Semi-Trailer	9
..	Other	8
Total Other	10	10	5	9	40	8	1	1	1	84
Total Lorries	27	88	886	919	1,513	1,372	2,949	500	69	59	59	8,383

X

No. 5—LORRIES: UNLADEN WEIGHT ACCORDING TO MAKE AND BODY CONSTRUCTION, TASMANIA—continued.

Make of Vehicle	Body Construction	Unladen Weight											Total
		Under 20 cwt.	20 and under 30 cwt.	30 and under 35 cwt.	35 and under 45 cwt.	45 and under 50 cwt.	50 and under 55 cwt.	55 and under 60 cwt.	60 and under 80 cwt.	80 and under 100 cwt.	100 cwt. and over	Not Stated	
Fargo	Platform	..	1	7	50	43	55	62	63	7	5	1	294
	Van	1	..	1	2
	Tipper	4	7	22	38
	Semi-Trailer	3	..	8	..	2	..	15
	Other	1	1
Total Fargo		..	1	7	55	44	58	72	94	10	8	7	350
Federal	Platform	1	..	6	..	3	..	1	..	13
	Tipper	1	1
	Semi-Trailer	3
Total Federal		1	1	..	6	..	4	17
Foden	Platform	13
	Tipper	2
	Semi-Trailer	6
	Other	4
Total Foden		..	6	36	126	245	242	177	295	14	19	12	1,163
Ford	Platform	2	1	1	6
	Van	5	..	2	12	97	132
	Tipper	1	7	10	5	8	14	10	1	..	52
	Semi-Trailer	7	7	1	13
	Other	..	1	37	138	264	254	200	414	26	12	12	1,366
Total Ford		2	7	4	27	14	20	19	13	8	1	1	1,076
G.M.C.	Platform	1	5	6
	Tipper	3
	Semi-Trailer	3
Total G.M.C.		4	27	14	20	20	18	9	3	7	116
International	Platform	..	2	17	160	118	209	250	460	71	18	6	1,311
	Van	2	..	1	2	7	1	13
	Tipper	1	3	15	16	128	21	4	..	188
	Semi-Trailer	4	4	6	5	30	8	20	..	77
	Other	2	4	3	31	5	4	..	54
Total International		..	2	17	167	127	235	281	656	106	46	6	1,643
Total Karrier	Platform	1	1	2
Leyland	Platform	8	15	11	47
	Van	1	..	1
	Tipper	1	5	27	..	33
	Semi-Trailer	9	5	17	..	31
	Other	3	..	2	..	5
Total Leyland		8	28	21	58	2	117
Mack	Platform	4	7	5	..	16
	Tipper	1	1
	Semi-Trailer	3	4	11
	Other	11
Total Mack		7	13	16	..	36
Mercedes Benz	Platform	1	6	7
	Tipper	1
	Semi-Trailer	1
	Other	1
Total Mercedes Benz		7	13	16	..	36
Morris	Platform	1
	Van	1
	Tipper	1
	Semi-Trailer	1
Total Morris		..	2	292	44	37	15	27	62	1	465
	Other	6
	Platform	10
	Van	20
	Tipper	6
	Semi-Trailer	3
Total Morris		..	2	292	48	38	15	28	74	1	501

No. 5—LORRIES: UNLADEN WEIGHT ACCORDING TO MAKE AND BODY CONSTRUCTION, TASMANIA—continued.

Make of Vehicle	Body Construction	Unladen Weight										Total			
		Under 20 cwt.	20 and under 30 cwt.	30 and under 35 cwt.	35 and under 45 cwt.	45 and under 50 cwt.	50 and under 55 cwt.	55 and under 60 cwt.	60 and under 80 cwt.	80 and under 100 cwt.	100 cwt. and over		Not Stated		
Oldsmobile	Platform	1	9	4	14
	Tipper	1	1	1
<i>Total Oldsmobile</i>	1	1	10	4	15
Reo	Platform	1	22
	Van	1
	Tipper	1
	Semi-Trailer	13
	Other	4
<i>Total Reo</i>	1	47
Scammell	1
	Semi-Trailer	1
<i>Total Scammell</i>	2
Seddon	Platform	4
	Other	1
<i>Total Seddon</i>	5
Studebaker	Platform	..	1	..	3	5	22
	Tipper	1
<i>Total Studebaker</i>	..	1	..	3	5	23
Thornycroft	5
	Semi-Trailer	1
	Other	1
<i>Total Thornycroft</i>	7
White	Platform	3
	Platform	..	1	..	2	85
	Tipper	25
	Semi-Trailer	9
	Other	7
<i>Total White</i>	126
<i>Total Willlys</i>	3
	Platform	..	5	4	1	55
	Platform	2	1
	Van	1
	Tipper	13
	Semi-Trailer	6
	Other	3	9
<i>Total Other</i>	..	5	4	5	5	1	7	28	14	52	16	5	2	7	84
Total Lorries	..	2	121	547	1,196	1,235	1,183	1,194	2,256	357	246	46	8,383		

No. 6—DIESEL-POWERED COMMERCIAL VEHICLES ACCORDING TO MAKE AND HORSEPOWER (R.A.C.), TASMANIA.

Make of Vehicle	Horsepower (R.A.C.)	Lorries	Omnibuses	Other Commercial Vehicles	Total
A.E.C.	41	8	12	..	20
	53	..	4	..	4
<i>Total A.E.C.</i>	8	16	..	24
Albion	28	69	69
	51	5	..	3	8
<i>Total Albion</i>	74	..	3	77
<i>Total Ansair</i>	45	..	2	..	2
Austin	29	16	16
	33	1	1
<i>Total Austin</i>	17	17
Bedford	29	2	1	..	3
	38	1	1
<i>Total Bedford</i>	3	1	..	4
Commer	29	27	27
	38	1	1
<i>Total Commer</i>	28	28
<i>Total De Soto</i>	29	1	1
Diamond T	29	1	1
	33	1	1
<i>Total Diamond T</i>	2	2
Dodge	29	3	3
	33	1	1
<i>Total Dodge</i>	4	4
<i>Total Fargo</i>	29	7	3	..	10
<i>Total Federal</i>	57	4	4
Foden	36	1	1
	43	24	2	2	28
<i>Total Foden</i>	25	2	2	29
<i>Total Ford</i>	33	10	2	..	12
<i>Total Guy</i>	22	2	1	..	3
International	29	3	3
	38	1	1
<i>Total International</i>	4	4
Leyland	34	26	..	4	30
	37	25	2	..	27
	48	..	15	..	15
	55	38	2	4	44
<i>Total Leyland</i>	Not Stated	2	..	8	2
Mack	43	91	19	8	118
	45	6	6
	47	6	6
<i>Total Mack</i>	15	15
Mercedes Benz	13	5	5
	30	9	9
<i>Total Mercedes Benz</i>	9	..	5	14
Morris	26	18	18
	28	3	3
<i>Total Morris</i>	21	21
<i>Total Reo</i>	29	1	1	..	2
<i>Total Scammell</i>	43	1	1
Seddon	29	4	3	..	7
	38	1	1
<i>Total Seddon</i>	5	3	..	8
Thornycroft	28	1	1
	30	3	3
	31	1	1
<i>Total Thornycroft</i>	5	5
<i>Total Vulcan</i>	29	3	3
<i>Total Other</i>	12	1	13	26
Grand Total	352	51	31	434

No. 7—MOTOR CYCLES ACCORDING TO MAKE, TASMANIA.

Make	Number of Cycles	Make	Number of Cycles
A.B.J.	1	Malvern Star	42
A.J.S.	297	Matchless	133
Acme	35	Minimotor	1
Adler	6	Mobylette	1
Ambassador	11	N.S.U.	5
Ariel	558	New Hudson	4
Autobyke	1	Norman	16
B.M.W.	13	Norton	157
B.S.A.	1,976	O.E.C.	1
Berini	13	Panther	25
Bown	1	Power Pak	3
Corgi	20	Puch	13
Cucciolo	5	Royal Enfield	227
Cyclomaster	11	Rudge	4
D.K.W.	4	Sun	1
Dot	2	Sunbeam	10
Douglas	18	T.W.N.	2
Ducatti	1	Triumph	382
Excelsior	48	Velocette	103
Francis Barnett	200	Vespa	43
Harley Davidson	232	Villiers	21
Hartley	1	Vincent	11
Heinkel	3	Zundapp	1
Indian	62	Other	28
James	112		
Jawa	185		
Lambretta	23	Total	5,073

No. 8—DISTRIBUTION OF VEHICLES ACCORDING TO LOCAL GOVERNMENT AREA AND STATISTICAL DIVISION, TASMANIA.

NOTE.—Vehicles have been allocated to Local Government Areas according to the addresses of the owners shown on the registration certificates, and the vehicles themselves are therefore not necessarily located or generally used in such areas. An index of Local Government areas appears on page 44.

Local Government Area	Motor Cars	Station Wagons	Omni-buses	Utili-ties	Panel Vans	Lorries	Other Com-mercial Vehicles	Total (excl. Motor Cycles)	Motor Cycles
METROPOLITAN AREA OF HOBART									
Hobart and Suburbs ..	15,084	150	240	2,953	884	2,203	73	21,587	1,130
LAUNCESTON AND SUBURBS									
Municipalities—									
City of Launceston ..	7,248	59	93	1,107	435	795	19	9,756	989
Beaconsfield (part) ..	86	..	3	17	9	3	..	118	11
Lilydale (part) ..	143	..	2	31	7	37	1	221	27
St. Leonards (part) ..	353	3	4	59	24	41	..	484	88
Westbury (part) ..	66	2	..	17	4	14	..	103	23
TOTAL ..	7,896	64	102	1,231	479	890	20	10,682	1,138
NORTH WESTERN STATISTICAL DIVISION									
Municipalities—									
Burnie ..	2,181	26	25	380	125	350	10	3,097	375
Circular Head ..	988	9	20	282	49	230	4	1,582	108
Deloraine ..	872	7	11	233	25	171	..	1,319	97
Devonport ..	1,914	16	13	419	113	300	7	2,782	239
Kentish ..	631	1	9	169	22	146	1	979	91
King Island ..	217	2	8	168	14	84	13	506	31
Latrobe ..	596	3	4	129	17	111	1	861	62
Penguin ..	479	4	7	92	21	104	..	707	105
Ulverstone ..	1,129	6	14	287	50	238	2	1,726	110
Wynyard ..	1,038	3	12	260	64	255	2	1,634	191
TOTAL ..	10,045	77	123	2,419	500	1,989	40	15,193	1,409
NORTH EASTERN STATISTICAL DIVISION									
Municipalities—									
Beaconsfield (part) ..	793	11	12	182	60	164	..	1,222	88
Fingal ..	665	1	11	154	23	123	1	978	80
Flinders ..	88	1	5	54	2	26	..	176	26
George Town ..	302	8	2	67	19	50	..	448	58
Lilydale (part) ..	265	1	6	115	15	98	..	500	68
Portland ..	192	3	5	76	6	55	..	337	35
Ringarooma ..	482	6	10	124	16	83	..	721	70
Scottsdale ..	467	5	4	207	31	105	1	820	49
TOTAL ..	3,254	36	55	979	172	704	2	5,202	474
NORTH MIDLAND STATISTICAL DIVISION									
Municipalities—									
Evandale ..	289	3	1	99	4	66	1	463	60
Longford ..	832	8	16	224	41	114	..	1,235	107
St. Leonards (part) ..	78	1	2	32	4	23	..	140	15
Westbury (part) ..	664	3	13	140	23	147	..	990	82
TOTAL ..	1,863	15	32	495	72	350	1	2,828	264
MIDLAND STATISTICAL DIVISION									
Municipalities—									
Bothwell ..	219	..	4	73	5	53	..	354	7
Campbell Town ..	322	5	2	92	17	88	1	527	31
Hamilton ..	724	6	6	161	25	166	..	1,088	62
Oatlands ..	504	1	5	172	12	124	..	818	26
Ross ..	116	..	2	46	3	37	..	204	21
TOTAL ..	1,885	12	19	544	62	468	1	2,991	147

No. 8—DISTRIBUTION OF VEHICLES ACCORDING TO LOCAL GOVERNMENT AREA
AND STATISTICAL DIVISION, TASMANIA—continued.

Local Government Area	Motor Cars	Station Wagons	Omni-buses	Utilities	Panel Vans	Lorries	Other Commercial Vehicles	Total (excl. Motor Cycles)	Motor Cycles
SOUTH EASTERN STATISTICAL DIVISION									
Municipalities—									
Brighton	329	1	3	109	19	109	..	570	26
Clarence (part)	265	5	4	74	15	66	..	429	26
Glamorgan	164	2	1	78	9	47	..	301	5
Green Ponds	97	..	2	24	2	41	..	166	9
Richmond	240	2	2	77	5	73	..	399	22
Sorell	372	..	6	106	16	119	..	619	23
Spring Bay	124	..	3	57	4	48	..	236	12
TOTAL	1,591	10	21	525	70	503	..	2,720	123
SOUTHERN STATISTICAL DIVISION									
Municipalities—									
Bruny	54	2	2	22	6	21	..	107	13
Esperance	425	3	6	68	16	87	1	606	43
Huon	992	..	10	182	34	312	4	1,534	63
Kingborough (part)	497	9	7	124	26	108	..	771	62
New Norfolk	1,117	3	19	307	67	238	2	1,753	68
Port Cygnet	340	2	5	90	8	93	..	538	33
Tasman	145	1	4	45	8	54	1	258	24
TOTAL	3,570	20	53	838	165	913	8	5,567	306
WESTERN STATISTICAL DIVISION									
Municipalities—									
Gormanston	22	8	3	14	..	47	4
Queenstown	413	2	8	71	22	55	3	574	47
Strahan	20	11	5	8	..	44	1
Waratah	40	3	3	16	..	62	..
Zeehan	200	2	7	51	11	46	1	318	20
TOTAL	695	4	15	144	44	139	4	1,045	72
Unknown	18	3	5	5	1	32	2
Commonwealth Government-owned (a)	53	4	..	97	59	219	11	443	8
Grand Total	45,954	392	660	10,228	2,512	8,383	161	68,290	5,073

(a) Not distributed according to Local Government Areas.

INDEX OF LOCAL GOVERNMENT AREAS.

Local Government Area	Page	Local Government Area	Page
Beaconsfield (both parts)	42	Kingborough (part)	(a)
Bothwell	42	Kingborough (part)	43
Brighton	43	Latrobe	42
Bruny	43	Launceston, City of	42
Burnie	42	Lilydale (both parts)	42
Campbell Town	42	Longford	42
Circular Head	42	New Norfolk	43
Clarence (part)	(a)	Oatlands	42
Clarence (part)	43	Penguin	42
Deloraine	42	Port Cygnet	43
Devonport	42	Portland	42
Esperance	43	Queenstown	43
Evandale	42	Richmond	43
Fingal	42	Ringarooma	42
Flinders	42	Ross	42
George Town	42	Scottsdale	42
Glenorchy	(a)	Sorell	43
Glamorgan	43	Spring Bay	43
Gormanston	43	St. Leonards (both parts)	42
Green Ponds	43	Strahan	43
Hamilton	42	Tasman	43
Hobart	(a)	Ulverstone	42
Hobart and Suburbs	42	Waratah	43
Huon	43	Westbury (both parts)	42
Kentish	42	Wynyard	42
King Island	42	Zeehan	43

(a) Included with Hobart and Suburbs.

CENSUS OF MOTOR VEHICLES.

31st DECEMBER, 1955.

PRICE LIST.

NOTE.—The bulletins listed below are obtainable by purchase from the Government Printer, Canberra.

BULLETIN.	DATE OF ISSUE.	PRICE.		
		EXCLUDING POSTAGE.	INCLUDING POSTAGE.	
			AUSTRALIA AND OTHER BRITISH COUNTRIES.	FOREIGN COUNTRIES.
		s. d.	s. d.	s. d.
No. 6: Tasmania	August, 1957	2 6	2 10	3 0
No. 7: Northern Territory and Australian Capital Territory	July, 1957	2 6	3 0	3 2

NOT FOR SALE COPY.*

By Authority: L. G. SHEA, Government Printer, Tasmania.

WHOLLY SET UP AND PRINTED IN AUSTRALIA.

*Copies may be purchased. See inside cover for Price List.